



PRODUCT CATALOG

2023 v.2

MKB Stormwater
Innovation

MKB Stormwater Innovation

About Us:

In 2012, MKB Company was founded on the principles of innovation and continuous change. At MKB Company we manufacture, create, and innovate high-quality products for the sediment and erosion control industry.

We support our distribution clients with dedicated logistics, rapid order turnaround, and innovative high-quality products; all with the goal of supporting our clients and the end users of our products.

In 2022, MKB Company acquired **Filtrexx International**, another leader in sustainable BMPs. Now together as one industry leader, we manufacture innovative products and solutions that allow contractors and distributors to serve customers looking for better environmental outcomes. For years, MKB and Filtrexx have worked separately to create products and services, as well as educate the industry on the most effective and durable stormwater BMPs in the market.

The unification of the two organizations combines both company's product lines to bring the best erosion and stormwater control product offerings to the industry nationwide. Expanded resources, readily available products, extended reach, expanded manufacturing locations, and combined service are just a few benefits MKB customers can expect. Our commitment to quality, consistency, and innovative products, delivered on time, is central to supporting our distribution networks.

MKB Company supports these principles from thirteen manufacturing locations across the US. Our facilities have state of the art manufacturing equipment that are the benchmark for all products we produce. **MKB Company is ready, MKB is innovation simplified.**

Mission Statement

At MKB, our mission is to provide a superior experience through innovation, dedicated logistics, and consistency. These 3 pillars of MKB Company guide us in everything we do.

Innovation

Our line of innovative products have changed the way companies comply with environmental requirements, resulting in less cost, less maintenance, and better results.

Dedicated Logistics

Logistics is a crucial component for any manufacturer. Quality product is only as good as how quickly we can get it to you! MKB Company prides itself in delivering our products in an unrivaled turnaround time to make sure our customers have the material they need, when they need it.

Consistency

When you order from MKB Company you can be assured that we are focused on providing quality products, quickly, and cost effectively. Our clients know we will always be there to get the job done, the same way every time.



888-578-0777 | mkbcompany.com | info@mkbcompany.com

TABLE OF CONTENTS:

1 Sediment Control

a. Filtrex [®] / Advanced Tubular Filters	
SiltSoxx [®] / Compost Filter Sock	4
SiltSoxx [®] RH / Rice Hull Filter Sock	8
Straw Wattle Product Line	11
SwitchSoxx [™] / Switchgrass Filter Sock	16
Diversion Sock / Compost Diversion Sock	18
StormCatcher [®] / Weighted Sediment Tube	20
RoadWattle [®] / Portable Road Wattle	22
b. BlackHawk [®] / Advanced Inlet Filter Mat	24
c. Siltron [®] / Advanced Silt Fence	26
d. Supplies	
CFS Installer Netting	28
CFS Pallet Netting	31
Wattle Netting	36
Installation Claw	40

2 Erosion Control

a. StrawMax [®] / Seeding Straw	41
b. ErosionTech [®] / Rolled Blanketing	42
Extended Term Erosion Blankets	43
Long Term Erosion Blankets	43
Short Term Erosion Blankets	43
Permanent Erosion Blankets	43
Staples by the Carton	43
c. Geotextiles	44
Non-Woven Fabrics	45
Woven Stabilization Fabrics	45
Woven Monofilaments	45
Geogrids	45

3 Stormwater Management


a. Filtrex EnviroSoxx [®] / Pollutant Filter Sock	46
b. Filtrex StormExx [®] / Catch Basin Filter	48

4 Green Infrastructure

a. Filtrex GroSoxx [®] / Vegetated Compost Sock	50
b. Filtrex GreenLoxx [®] / Vegetated Wall, Slope & Shore Systems	52



PRODUCT COMPARISON GUIDE

PRODUCT	CONSTRUCTION						POST-CONSTRUCTION										ADDITIONAL FEATURES		
	SEDIMENT CONTROL				EROSION CONTROL		STORMWATER MANAGEMENT						GREEN INFRASTRUCTURE						
	Perimeters	Inlets	Ditch Checks	Runoff Diversion	Slope Interruption	Slope Stabilization	Perimeters	Inlets	Ditch Checks	Slope Interruption	Swales & Channels	Debris	Pollutant Removal	Swales & Channels	Slope, Shore, Bank Stabilization	Impervious Surfaces	Nature90 (bio option)	Sensitive Watersheds	
<div>SILTSOXX[®] Compost Filter Sock</div>	X	X	X		X											X		X	
<div>SILTSOXX[®] Natural Original Compost Filter Sock</div>	X				X											X	X	X	
<div>SILTSOXX[®] Natural+ Compost Filter Sock</div>	X	X	X		X											X	X	X	
<div>SILTSOXX[®] RH Rice Hull Filter Sock</div>	X				X													X	
<div>SILTSOXX[®] RH⁺ Natural+ Rice Hull Filter Sock</div>	X				X												X	X	
<div>STRAW WATTLE Common & Advanced Straw Wattle</div>	X	X	X		X												X		
<div>SWITCHSOXX[™] Switchgrass Filter Sock</div>	X				X														
<div>DIVERSIONSOXX[™] Compost Diversion Sock</div>				X															
<div>STORMCATCHER[®] Weighted Sediment Filter Tube</div>	X	X														X			
<div>ROADWATTLE[®] Portable Road Wattle</div>	X															X			
<div>ENVIROSOXX[®] Pollutant Filter Sock</div>							X	X	X	X	X		X			X		X	
<div>STORMEXX[®] Catch Basin Filter</div>								X				X	X			X		X	
<div>GROSOXX[®] Vegetated Filter Sock</div>														X				X	
<div>GREENLOXX[®] Vegetated Wall, Slope & Shore System</div>															X			X	
<div>BASIC NET CFS Installer Netting</div>	X				X											X		X	
<div>BASIC+ NET CFS Installer Netting</div>	X				X											X		X	
<div>STANDARD NET CFS Pallet Netting</div>	X	X	X		X									X		X		X	
<div>DURABLE NET CFS Pallet Netting</div>														X		X		X	
<div>DURABLE+ NET CFS Pallet Netting</div>	X	X	X	X	X											X		X	
<div>NATURAL ORIGINAL NET CFS Pallet Netting</div>	X				X											X	X	X	
<div>NATURAL+ NET CFS Pallet Netting</div>	X	X	X		X												X	X	
<div>EXTRUDED NET Straw Wattle Netting</div>	X	X	X		X														
<div>NATURAL ORIGINAL NET Straw Wattle Netting</div>	X				X												X		
<div>NATURAL+ NET Straw Wattle Netting</div>	X	X	X		X												X		
<div>BLACKHAWK[™] Advanced Inlet Filter Mat</div>		X						X				X				X	X		
<div>EROSIONTECH</div>						X											X		
<div>SILTRON[®] Advanced Silt Fence</div>	X																	X	
<div>STRAWMAX[®]</div>						X													
<div>GEOTEXTILES</div>						X									X				

SILTSOXX®

Compost Filter Sock



Now a part of the MKB family — Filtrex SiltSoxx.

Easily installed for a variety of construction applications, SiltSoxx reduces the labor cost required for installation and maintenance, while delivering optimal performance.

Common applications include perimeter control, inlet protection, check dams, and slope interruption.

SiltSoxx is prefilled with certified FilterMedia™, ready to ship, and easy to install. Available in a variety of sizes, configurations, and netting materials for any project requirements.

SiltSoxx is also available in two natural netting options, eliminating the need for field removal.

ORIGINAL Netting:

- The most widely recognized & used polypropylene netting in the industry
- Available in classic green/black stripe

NATURAL ORIGINAL Netting:

- 100% Biodegradable Cotton fiber
- Functional field longevity up to 12 mo.

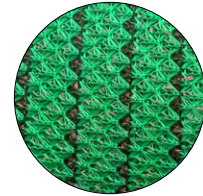
NATURAL+ Netting:

- 100% Biodegradable Wood fiber
- Functional field longevity up to 18 mo.



SiltSoxx Original Product Specs:

Netting Material Type	Original Pallet Netting Heavy Duty Multi-Filament Polypropylene (MFPP)
Netting Degradation	Photodegradable
Netting Diameters	5", 8", 12", 18", 24"
Netting Opening Size	1/8"
Netting Color	Green w/ Thin Black Stripe
Fabric Tensile Strength (ASTM D4595)¹	546 lbs
Fill Type	Tested & Certified, Locally Sourced Composted FilterMedia
Functional Longevity²	up to 5 years
Edging Material	Edging Media Bags Available
Staking Recommendation	Every 10-ft (stakes not included on precuts)



Netting Sample



Fill Sample

¹Tensile Strength is based on 12" diameter using ATSM D4595. See Filtrix TechLink #3342 for full tensile strength testing.

²Functional longevity ranges are estimates only. Site specific environmental conditions may result in significantly shorter or longer time periods.

ORIGINAL Item List:

Part Number	Diameter	Total Linear Feet per pallet	Unit Length	Units per pallet	Stakes per pallet	Pallet Weight
P05-400S2	5-in	400-ft	200	2	42	~ 1600 lbs
PN05-400S16	5-in	400-ft	25-ft	16	0	~ 1600 lbs
P08-200	8-in	200-ft	200-ft	1	21	~ 1600 lbs
PN08-200S20	8-in	200-ft	10-ft	20	0	~ 1600 lbs
PN08-200S10	8-in	200-ft	20-ft	10	0	~ 1600 lbs
P12-110	12-in	110-ft	110-ft	1	12	~ 1700 lbs
PN12-100S10	12-in	100-ft	10-ft	10	0	~ 1650 lbs
P18-55	18-in	55-ft	55-ft	1	7	~ 1750 lbs
PN18-50S5	18-in	50-ft	10-ft	5	0	~ 1650 lbs
P24-30	24-in	30-ft	30-ft	1	4	~ 1800 lbs

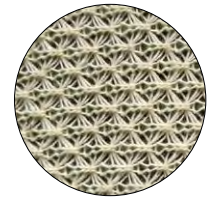
Shipping Specs:

Pallets per TL	26
Shipping Dimensions	40L x 48W x 66H
Packaging	40 x 48 Pallet with Plastic Stretch-Wrap or Super Sack
Storage Life	Under Roof - 6 months / Outdoors - 3 months

Diameter	Stake Size (Nominal)
5-in	1" x 1" x 12"
8-in	2" x 2" x 24"
12-in	2" x 2" x 24"
18-in	2" x 2" x 36"
24-in	2" x 2" x 42"

SiltSoxx Natural Original Product Specs:

Netting Material Type	Natural Original Pallet Netting All Natural Biodegradable Cotton Fiber
Netting Degradation	Biodegradable
Netting Diameters	5", 8", 12"
Netting Opening Size	1/8"
Netting Color	Beige
Fabric Tensile Strength (ASTM D4595) ¹	175 lbs
Fill Type	Tested & Certified, Locally Sourced Composted FilterMedia
Functional Longevity ²	up to 12 months
Edging Material	Edging Media Bags Available
Staking Recommendation	Every 10-ft (stakes not included on precuts)



Netting Sample



Fill Sample

¹Tensile Strength is based on 12" diameter using ATSM D4595. See Filtrex TechLink #3342 for full tensile strength testing.

²Functional longevity ranges are estimates only. Site specific environmental conditions may result in significantly shorter or longer time periods.

NATURAL ORIGINAL Item List:

Part Number	Diameter	Total Linear Feet per pallet	Unit Length	Units per pallet	Stakes per pallet	Pallet Weight
PC05-400S2	5-in	400-ft	200	2	42	~ 1600 lbs
PCN05-400S16	5-in	400-ft	25-ft	16	0	~ 1600 lbs
PC08-200	8-in	200-ft	200-ft	1	21	~ 1600 lbs
PCN08-200S20	8-in	200-ft	10-ft	20	0	~ 1600 lbs
PCN08-200S10	8-in	200-ft	20-ft	10	0	~ 1600 lbs
PC12-110	12-in	110-ft	110-ft	1	12	~ 1700 lbs
PCN12-100S10	12-in	100-ft	10-ft	10	0	~ 1650 lbs

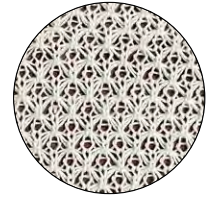
Shipping Specs:

Pallets per TL	26
Shipping Dimensions	40L x 48W x 66H
Packaging	40 x 48 Pallet with Plastic Stretch-Wrap or Super Sack
Storage Life	Storage not recommended. All SiltSoxx Natural products are made to order due to biodegradable properties.

Diameter	Stake Size (Nominal)
5-in	1" x 1" x 12"
8-in	2" x 2" x 24"
12-in	2" x 2" x 24"

SiltSoxx Natural+ Product Specs:

Netting Material Type	Natural + Pallet Netting All Natural Biodegradable Wood Fiber
Netting Degradation	Biodegradable
Netting Diameters	5", 8", 12"
Netting Opening Size	1/8"
Netting Color	Off-White
Fabric Tensile Strength (ASTM D4595)¹	249 lbs
Fill Type	Tested & Certified, Locally Sourced Composted FilterMedia
Functional Longevity²	up to 18 months
Edging Material	Edging Media Bags Available
Staking Recommendation	Every 10-ft (stakes not included on precuts)



Netting Sample



Fill Sample

¹Tensile Strength is based on 12" diameter using ATSM D4595. See Filtrex TechLink #3342 for full tensile strength testing.

²Functional longevity ranges are estimates only. Site specific environmental conditions may result in significantly shorter or longer time periods.

NATURAL+ Item List:

Item Number	Diameter	Total Linear Feet per pallet	Unit Length	Units per pallet	Stakes per pallet	Pallet Weight
PW05-400S2	5-in	400-ft	200	2	42	~ 1600 lbs
PWN05-400S16	5-in	400-ft	25-ft	16	0	~ 1600 lbs
PW08-200S2	8-in	200-ft	100-ft	2	22	~ 1600 lbs
PWN08-200S20	8-in	200-ft	10-ft	20	0	~ 1600 lbs
PWN08-200S10	8-in	200-ft	20-ft	10	0	~ 1600 lbs
PW12-110	12-in	110-ft	110-ft	1	12	~ 1700 lbs
PWN12-100S10	12-in	100-ft	10-ft	10	0	~ 1650 lbs

Shipping Specs:

Pallets per TL	26
Shipping Dimensions	40L x 48W x 66H
Packaging	40 x 48 Pallet with Plastic Stretch-Wrap or Super Sack
Storage Life	Storage not recommended. All SiltSoxx Natural products are made to order due to biodegradable properties.

Diameter	Stake Size (Nominal)
5-in	1" x 1" x 12"
8-in	2" x 2" x 24"
12-in	2" x 2" x 24"

SILTSOXX® RH

Rice Hull Filter Sock



The newest, lightest filter sock for your BMP toolbox.

Independent testing shows that rice hulls form an excellent high flow, high sediment retention, 3 dimensional filtering matrix when used in E&SC tubular products.

Rice hulls are a domestic by-product from rice farming within the U.S. in California, Arkansas, the Gulf Coast, and in the Mississippi River Delta region.

Use SiltSoxx RH for perimeters, slope interruption and other hard-to-reach project sites - no trenching required like straw wattles.

Eliminate labor removal and landfill costs with our 100% biodegradable Natural + netting option. Once your project is complete, the biodegradable rice hull media can be left on site, forming a soil amendment.

General Details:

- Lighter and easier to handle on the jobsite
- Promotes vegetative cover
- Available in 100% Biodegradable Natural + Netting



Compared to Straw Wattle:

- Durable, high performance CFS netting
- Same shipping configuration as wattles
- Continuous length pallets include stakes
- Heavier so it stays in place better
- No straw means no mess, no rodents
- No trenching required - stake every 5 feet
- Lasts longer and keeps its shape better

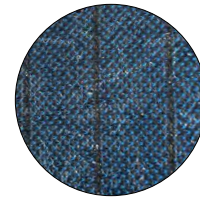


SILTSOXX® RH

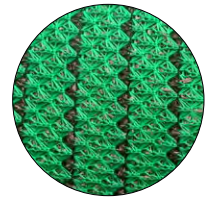
Rice Hull Filter Sock

SiltSoxx RH Product Specs:

Netting Material Type	Diamond Sock® Pallet Netting or Original Pallet Netting Heavy Duty Multi-Filament Polypropylene (MFPP)
Netting Degradation	Photodegradable
Netting Diameters	9", 12", 18"
Netting Opening Size	1/8"
Netting Color	Blue w/ Black Stripe or Green w/ Thin Black Stripe
Fabric Tensile Strength (ASTM D4595)¹	524 lbs (Diamond Sock Netting) 546 (Original Netting)
Fill Type	Domestically Produced Rice Hulls
Functional Longevity²	1-2 years
Edging Material	Edging Media Bags Available
Staking Recommendation	Every 5-ft (stakes not included on precuts)



Netting Sample



Netting Sample



Fill Sample

¹Tensile Strength is based on 12" diameter using ATSM D4595. See Filtrex TechLink #3342 for full tensile strength testing.

²Functional longevity ranges are estimates only. Site specific environmental conditions may result in significantly shorter or longer time periods.

Item List:

Part Number	Diameter	Total Linear Feet per pallet	Unit Length	Units per pallet	Stakes per pallet	Pallet Weight
RH9-305	9-in	305-ft	205-ft/100-ft	2	63	~ 900 lbs
RH9-14-25	9-in	350-ft	25-ft	14	0	~ 900 lbs
RH12-160	12-in	160-ft	160-ft	1	33	~ 850 lbs
RH12-10-20	12-in	200-ft	20-ft	10	0	~ 850 lbs
RH12-20-10	12-in	200-ft	10-ft	20	0	~ 850 lbs
RH18-65	18-in	65-ft	65-ft	1	14	~ 850 lbs
RH18-6-10	18-in	60-ft	10-ft	6	0	~ 850 lbs

Shipping Specs:

Pallets per TL	28
Shipping Dimensions	40L x 48W x 66H
Packaging	40 x 48 Pallet with Plastic Stretch-Wrap or Super Sack
Storage Life	Under Roof - 6 months / Outdoors - 3 months

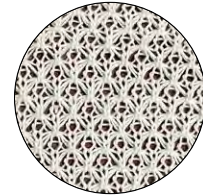
Diameter	Stake Size (Nominal)
8-in	2" x 2" x 24"
12-in	2" x 2" x 24"
18-in	2" x 2" x 36"

SILTSOXX RH®

Natural+ Rice Hull Filter Sock

SiltSoxx RH Natural+ Product Specs:

Netting Material Type	Natural + Pallet Netting All Natural Biodegradable Wood Fiber
Netting Degradation	Biodegradable
Netting Diameters	9", 12"
Netting Opening Size	1/8"
Netting Color	Off-White
Fabric Tensile Strength (ASTM D4595)¹	249 lbs
Fill Type	Domestically Produced Rice Hulls
Functional Longevity²	up to 18 months
Edging Material	Edging Media Bags Available
Staking Recommendation	Every 5-ft (stakes not included on precuts)



Netting Sample



Fill Sample

¹Tensile Strength is based on 12" diameter using ATSM D4595. See Filtrex TechLink #3342 for full tensile strength testing.

²Functional longevity ranges are estimates only. Site specific environmental conditions may result in significantly shorter or longer time periods.

Item List:

Part Number	Diameter	Total Linear Feet per pallet	Unit Length	Units per pallet	Stakes per pallet	Pallet Weight
RHW9-305	9-in	305-ft	205-ft/100-ft	2	63	~ 900 lbs
RHWN9-14-25	9-in	350-ft	25-ft	14	0	~ 900 lbs
RHW12-160	12-in	160-ft	160-ft	1	33	~ 850 lbs
RHWN12-10-20	12-in	200-ft	20-ft	10	0	~ 850 lbs
RHWN12-20-10	12-in	200-ft	10-ft	20	0	~ 850 lbs

Shipping Specs:

Pallets per TL	28
Shipping Dimensions	40L x 48W x 66H
Packaging	40 x 48 Pallet with Plastic Stretch-Wrap or Super Sack
Storage Life	Under Roof - 6 months / Outdoors - 3 months

Diameter	Stake Size (Nominal)
8-in	2" x 2" x 24"
12-in	2" x 2" x 24"

STRAW WATTLE

Common & Advanced Straw Wattle



Common Wattle

A low cost, light weight BMP alternative, now with Advanced Netting Options.

Our weed-free wattles provide perimeter protection along contours or at the base of slopes, inlets, and roadways to reduce soil erosion, runoff and retain sediment.

As an advanced alternative to traditional, common Straw Wattles, MKB offers our Diamond Wattle. It is everything you like about a wattle (cheap, lightweight, easy to handle), with none of the problems! The net won't tear, significantly outlasts traditional wattle netting, and keeps rodents out of your warehouse. Give it a try, you will never go back to the traditional wattle again!

MKB also offers a biodegradable wattle, made with cotton mesh - the biodegradable wattle solution you are looking for.

General Details:

- Available in 9, 12, or 20-in diameters
- Diamond Wattle uses same premium netting as Compost Filter Sock - won't tear & outlasts traditional wattle netting
- Biodegradable netting available



Diamond Wattle



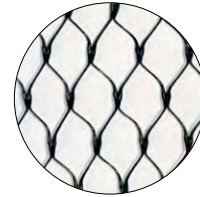
Natural Original Wattle

STRAW WATTLE

Common & Advanced Straw Wattle

Extruded Straw Wattle Product Specs:

Netting Material Type	Common Wattle Netting Extruded Polyethelene
Netting Degradation	UV Stabilized
Netting Diameters	9", 12"
Netting Color	Black
Fabric Tensile Strength (Test Method RW82004)	26 +/- 1 kg (9") 21 +/- 2 kg (12")
Fill Type	Wheat Straw
Staking Recommendation	Every 5-ft (stakes not included)



Netting Sample



Fill Sample

Item List:

Part Number	Diameter	Total Linear Feet per pallet	Unit Length	Units per pallet	Unit Weight	Pallet Weight
SW9-14-25	9-in	350-ft	25-ft	14	38 lb +/- 10%	~ 590 lbs
SW9-24-10	9-in	240-ft	10-ft	24	16 lb +/- 10%	~ 485 lbs
SW12-20-10	12-in	200-ft	10-ft	20	30 lb +/- 10%	~ 680 lbs
SW12-10-20	12-in	200-ft	20-ft	10	60 lb +/- 10%	~ 680 lbs

Shipping Specs:

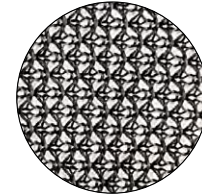
Pallets per TL	up to 28
Shipping Dimensions	40L x 48W x 66H
Packaging	40 x 48 Pallet; Wattles are strapped together, and pallet is stretch-wrapped
Storage Life	Under Roof - 6 months / Outdoors - 3 months

STRAW WATTLE

Common & Advanced Straw Wattle

Diamond Wattle Product Specs:

Netting Material Type	Diamond Sock® Standard Pallet Netting Multi-Filament Polypropylene (MFPP)
Netting Degradation	Photodegradable
Netting Diameters	9", 12", 20"
Netting Opening Size	1/8"
Netting Color	Black
Fabric Tensile Strength (ASTM D4595)¹	561 lbs
Fill Type	Wheat Straw
Functional Longevity²	1-2 years
Staking Recommendation	Every 5-ft (stakes not included)



Netting Sample



Fill Sample

¹Tensile Strength is based on 12" diameter using ATSM D4595. See Filtrexx TechLink #3342 for full tensile strength testing.

²Functional longevity ranges are estimates only. Site specific environmental conditions may result in significantly shorter or longer time periods.

Item List:

Part Number	Diameter	Total Linear Feet per pallet	Unit Length	Units per pallet	Unit Weight	Pallet Weight
SWD9-200	9-in	200-ft	200-ft	1	N/A	~ 475 lbs
SWD9-14-25	9-in	350-ft	25-ft	14	38 lb +/- 10%	~ 590 lbs
SWD9-24-10	9-in	240-ft	10-ft	24	16 lb +/- 10%	~ 485 lbs
SWD12-20-10	12-in	200-ft	10-ft	20	30 lb +/- 10%	~ 680 lbs
SWD12-10-20	12-in	200-ft	20-ft	10	60 lb +/- 10%	~ 680 lbs
SWD18-50-1	18-in	50-ft	50-ft	1	N/A	~ 500 lbs

Shipping Specs:

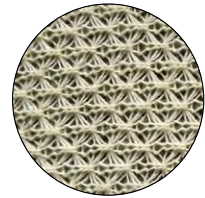
Pallets per TL	up to 28
Shipping Dimensions	40L x 48W x 66H
Packaging	40 x 48 Pallet; Wattles are strapped together, and pallet is stretch-wrapped
Storage Life	Under Roof - 6 months / Outdoors - 3 months

STRAW WATTLE

Common & Advanced Straw Wattle

Natural Original Straw Wattle Product Specs:

Netting Material Type	Natural Original Netting All Natural Biodegradable Cotton Fiber
Netting Degradation	Biodegradable
Netting Diameters	9", 12", 20"
Netting Opening Size	1/8"
Netting Color	Beige
Fabric Tensile Strength (ASTM D4595) ¹	175 lbs
Fill Type	Wheat Straw
Functional Longevity ²	3-6 months
Staking Recommendation	Every 5-ft (stakes not included)



Netting Sample



Fill Sample

¹Tensile Strength is based on 12" diameter using ATSM D4595. See Filtrex TechLink #3342 for full tensile strength testing.

²Functional longevity ranges are estimates only. Site specific environmental conditions may result in significantly shorter or longer time periods.

Item List:

Part Number	Diameter	Total Linear Feet per pallet	Unit Length	Units per pallet	Unit Weight	Pallet Weight
SWC9-200	9-in	200-ft	200-ft	1	N/A	~ 475 lbs
SWC9-14-25	9-in	350-ft	25-ft	14	38 lb +/- 10%	~ 590 lbs
SWC9-24-10	9-in	240-ft	10-ft	24	16 lb +/- 10%	~ 485 lbs
SWC12-20-10	12-in	200-ft	10-ft	20	30 lb +/- 10%	~ 680 lbs
SWC12-10-20	12-in	200-ft	20-ft	10	60 lb +/- 10%	~ 680 lbs

Shipping Specs:

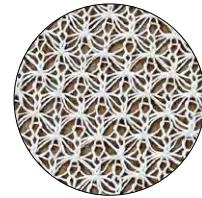
Pallets per TL	up to 28
Shipping Dimensions	40L x 48W x 66H
Packaging	40 x 48 Pallet; Wattles are strapped together, and pallet is stretch-wrapped
Storage Life	Storage not recommended for Biodegradable Wattles

STRAW WATTLE

Common & Advanced Straw Wattle

NATURAL+ Straw Wattle Product Specs:

Netting Material Type	Natural + Wattle Netting All Natural Biodegradable Wood Fiber
Netting Degradation	Biodegradable
Netting Diameters	9", 12"
Netting Opening Size	3/8"
Netting Color	Off-white
Fabric Tensile Strength (ASTM D4595)¹	N/A
Fill Type	Wheat Straw
Functional Longevity²	Up to 18 months
Staking Recommendation	Every 5-ft (stakes not included)



Netting Sample



Fill Sample

¹Tensile Strength is based on 12" diameter using ATSM D4595. See Filtrex TechLink #3342 for full tensile strength testing.

²Functional longevity ranges are estimates only. Site specific environmental conditions may result in significantly shorter or longer time periods.

Item List:

Part Number	Diameter	Total Linear Feet per pallet	Unit Length	Units per pallet	Unit Weight	Pallet Weight
SWW9-200	9-in	200-ft	200-ft	1	N/A	~ 475 lbs
SWW9-14-25	9-in	350-ft	25-ft	14	38 lb +/- 10%	~ 590 lbs
SWW9-24-10	9-in	240-ft	10-ft	24	16 lb +/- 10%	~ 485 lbs
SWW12-20-10	12-in	200-ft	10-ft	20	30 lb +/- 10%	~ 680 lbs
SWW12-10-20	12-in	200-ft	20-ft	10	60 lb +/- 10%	~ 680 lbs

Shipping Specs:

Pallets per TL	up to 28
Shipping Dimensions	40L x 48W x 66H
Packaging	40 x 48 Pallet; Wattles are strapped together, and pallet is stretch-wrapped
Storage Life	Storage not recommended for Biodegradable Wattles

SWITCHSOXX™

Switchgrass Filter Sock



Compost Filter Sock on a diet.

Switchgrass Filter Sock is much lighter than a Compost Filter Sock of similar diameter. This allows for all sorts of efficiencies (see below). The biggest one – you can put down more sock each day. This is important for large projects where E&S crews have to keep up.

Because performance matters, SwitchSoxx is independently tested, and approved by PA DEP for HQ and EV watersheds.

Something good just got better (a little family competition never hurts).

General Details:

- Independently tested for hydraulic flow and sediment removal
- No trenching required - stake every 5 feet
- Available pre-filled diameters are 8, 12, 18, and 24 - inch
- Palletized standard in a supersack and available in continuous or precut lengths
- Much lower weight per pallet (650 lbs vs. 1750 lbs)
- On average, 36% more footage per Tractor Load (1430 vs. 1950 linear feet of 18 - inch).
- Longer lengths on a pallet or in a super sack
- Promotes vegetative cover

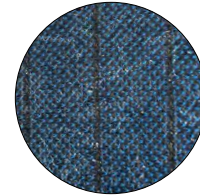


SWITCHSOXX™

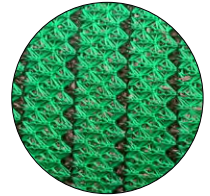
Switchgrass Filter Sock

SwitchSoxx Product Specs:

Netting Material Type	Diamond Sock® Pallet Netting or Original Pallet Netting Heavy Duty Multi-Filament Polypropylene (MFPP)
Netting Degradation	Photodegradable
Netting Diameters	8", 12", 18", 24"
Netting Opening Size	1/8"
Netting Color	Blue w/ Black Stripe or Green w/ Thin Black Stripe
Fabric Tensile Strength (ASTM D4595)¹	524 lbs (Diamond Sock Netting) 546 (Original Netting)
Fill Type	Locally Sourced, Weed Free Switchgrass
Functional Longevity²	1 year
Edging Material	Edging Media Bags Available
Staking Recommendation	Every 5-ft



Netting Sample



Netting Sample



Fill Sample

¹Tensile Strength is based on 12" diameter using ATSM D4595. See Filtrex TechLink #3342 for full tensile strength testing.

²Functional longevity ranges are estimates only. Site specific environmental conditions may result in significantly shorter or longer time periods.

Item List:

Part Number	Diameter	Total Linear Feet per pallet	Unit Length	Units per pallet	Stakes per pallet	Pallet Weight
SS8-205-SS	8-in	205-ft	205-ft	1	42	~ 600 lbs
SS12-125-SS	12-in	125-ft	125-ft	1	26	~ 600 lbs
SS18-65-SS	18-in	65-ft	65-ft	1	14	~ 650 lbs
SS24-40-SS	24-in	40-ft	40-ft	1	9	~ 665 lbs

Shipping Specs:

Pallets per TL	30
Shipping Dimensions	40L x 48W x 66H
Packaging	40 x 48 Pallet with Super Sack
Storage Life	Under Roof - 6 months / Outdoors - 3 months

Diameter	Stake Size (Nominal)
8-in	2" x 2" x 24"
12-in	2" x 2" x 24"
18-in	2" x 2" x 36"
24-in	2" x 2" x 42"

DIVERSIONSOXX[™]

Compost Diversion Sock



Divert stormwater runoff, naturally.

DiversionSoxx is a conveyance BMP that replaces an excavated fresh water diversion ditch. DiversionSoxx is much heavier and denser than Compost Filter Sock so water is conveyed along it, not through it.

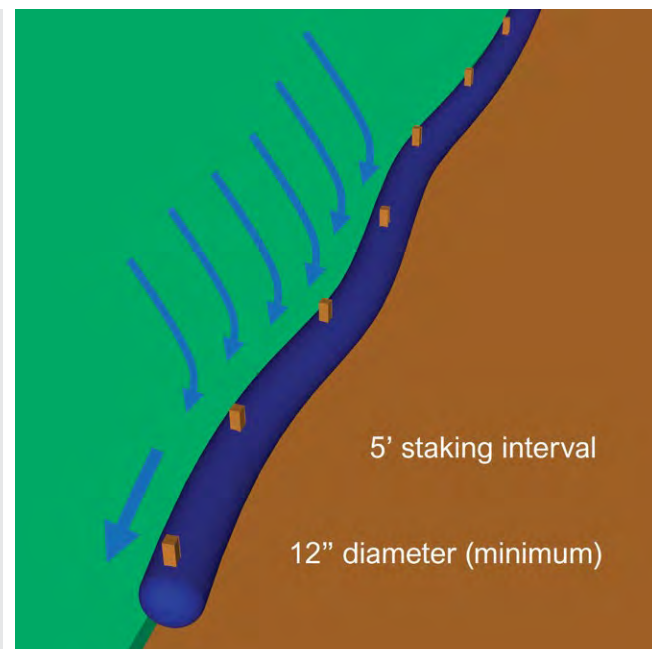
DiversionSoxx is placed above the jobsite in a diagonal orientation. Fresh water flows along (not through) DiversionSoxx and around the disturbed area.

DiversionSoxx can also be used within the disturbed area to direct sediment-laden water to a sediment trap or off a ROW in a water bar application (where excavation is not possible).

If desired and depending on the application, this product can be vegetated and left in place as a permanent stormwater device.

General Details:

- Available in 12, 18, or 24-in diameters
- Available on pallet or in super sack
- Little to no hydraulic flow through
- 50% CFS fill plus 50% leaf compost
- 30% heavier than Compost Filter Sock
- Can be vegetated as permanent device
- Stakes included for every 5-ft
- Minimum 12-in diameter, 5% diagonal fall
- Can be adjusted/moved on jobsite
- Easier than excavating fresh water diversion ditch to install and de-install

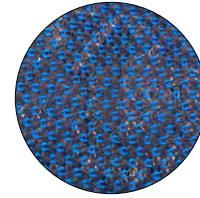


DIVERSIONSOXX™

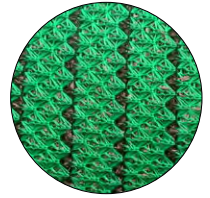
Compost Diversion Sock

DiversionSoxx Product Specs:

Netting Material Type	Diamond Sock® Pallet Netting or Original Pallet Netting Heavy Duty Multi-Filament Polypropylene (MFPP)
Netting Degradation	Photodegradable
Netting Diameters	12", 18", 24"
Netting Opening Size	1/8"
Netting Color	Blue w/ Black Stripe or Green w/ Thin Black Stripe
Fabric Tensile Strength (ASTM D4595)¹	524 lbs (Diamond Sock Netting) 546 (Original Netting)
Fill Type	50% Composted Hardwood Mulch/ 50% Leaf Compost
Functional Longevity²	1-2 years
Staking Recommendation	Every 5-ft



Netting Sample



Netting Sample



Fill Sample

¹Tensile Strength is based on 12" diameter using ATSM D4595. See Filtrex TechLink #3342 for full tensile strength testing.

²Functional longevity ranges are estimates only. Site specific environmental conditions may result in significantly shorter or longer time periods.

Item List:

Part Number	Diameter	Total Linear Feet per pallet	Unit Length	Units per pallet	Stakes per pallet	Pallet Weight
DP12-110	12-in	110-ft	110-ft	1	12	~ 2100 lbs
DP12-10-10	12-in	100-ft	10-ft	10	0	~ 1950 lbs
DP18-55	18-in	55-ft	55-ft	1	6	~ 2100 lbs
DP18-5-10	18-in	50-ft	10-ft	5	0	~ 1950 lbs
DP24-40*	24-in	40-ft	40-ft	1	5	~ 2100 lbs

*DP24-40 not available in Original Green w/ Thin Black Stripe netting.

Shipping Specs:

Pallets per TL	22
Shipping Dimensions	40L x 48W x 66H
Packaging	40 x 48 Pallet with Plastic Stretch-Wrap or Super Sack
Storage Life	Under Roof - 6 months / Outdoors - 3 months

Diameter	Stake Size (Nominal)
12-in	2" x 2" x 24"
18-in	2" x 2" x 36"
24-in	2" x 2" x 42"

STORMCATCHER[®]

Weighted Sediment Filter Tube



Robust, flexible BMP for people and places where performance matters.

StormCatcher is a multipurpose tubular BMP, used where a temporary robust filter berm is needed. The textile is tough and long-lasting.

Filled with a patent-pending heat-treated rice hull mixed with gravel that forms a highflow, high sediment retention 3-dimensional filtering matrix.

Similar products that use old ground up tires just can't do this. Plus, the the biodegradable rice hull media can be left on site, forming a soil amendment – rubber can't.

Benefits:

- Available in 12 and 18 foot lengths
- Textile is 1/8-inch opening heavy-duty Polyethylene
- Four integrated straps for easy moving
- Fill is all-natural rice hulls and gravel
- No sharp wires
- Lighter and easier to handle than rubber-filled wattles
- Field longevity of up to one year
- Available in Hi-Vis orange for maximum visibility

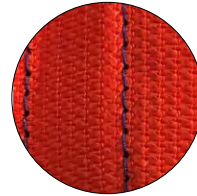


STORMCATCHER®

Weighted Sediment Filter Tube

StormCatcher Product Specs:

Netting Material Type	275g/m ² reinforced slit film PE
Netting Color	Blaze Orange
End Closure	hog rings -or- zip ties
Handling Straps	4 per unit (blue)
Fabric Tensile Strength (ASTM D 4632)	MD – 267 lbs. TD – 168 lbs.
Elongation at Max Load (ASTM 4632)	MD – 66% TD – 109%
Permittivity g/m/ft² (ASTM D 4491 C)	180 g/m/ft ²
Fill Type	Heat-Treated Rice Hulls 50% Gravel fill on 9-inch only
Functional Longevity¹	Up to 1 year



Netting Sample



Rice Hull Fill Sample



Gravel Fill Sample

¹Functional longevity ranges are estimates only. Site specific environmental conditions may result in significantly shorter or longer time periods.

Item List:

Part Number	Diameter	Total Linear Feet per pallet	Unit Length	Units per pallet	Unit Weight	Pallet Weight
WST9-8	9-in	192-ft	8-ft	24	~ 65 lbs	~ 1560 lbs
WST9-4	9-in	192-ft	4-ft	48	~ 33 lbs	~ 1560 lbs
WST12-10	12-in	100-ft	10-ft	10	~ 115 lbs	~ 1150 lbs
WST18-10	18-in	60-ft	10	6	~ 200 lbs	~ 1200 lbs

Shipping Specs:

Pallets per TL	up to 28
Shipping Dimensions	40L x 48W x 66H
Packaging	Super Sack
Storage Life	Under Roof - 6 months / Outdoors - 3 months

ROADWATTLE®

Portable Road Wattle



Sometimes you need a filter sock that can be moved.

RoadWattle is the answer – it's designed for daily portability. Use it across access roads at night, during rainouts, and near stream crossings on pipeline and powerline projects.

RoadWattle is filled with chopped switchgrass – a PADEP - approved alternative fill material for Compost Filter Sock.

RoadWattle weighs 50% less than Compost Filter Sock and is made of heavy duty textile and strapping – enabling the device to be moved again and again.

Comes in Hi-Vis orange for maximum visibility.

Benefits:

- Available in 12 and 18 foot lengths
- Textile is 1/8-inch opening heavy-duty Polyethylene
- Four integrated straps for easy moving
- Fill is chopped switchgrass or pine straw
- Sock quickly dries and is moveable after rain event
- Available coiled on a pallet or in a super sack
- Field longevity of up to one year
- Approved by PA DEP for HQ and EV watersheds
- Can be staked through or driven over (if necessary)
- Available in Hi-Vis orange for maximum visibility

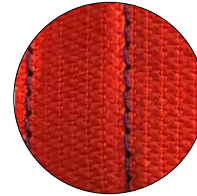


ROADWATTLE®

Portable Road Wattle

RoadWattle Product Specs:

Netting Material Type	275g/m ² reinforced slit film Polyethylene
Netting Color	Blaze Orange
End Closure	hog rings -or- zip ties
Handling Straps	4 per unit (blue)
Fabric Tensile Strength (ASTM D 4632)	MD – 267 lbs. TD – 168 lbs.
Elongation at Max Load (ASTM 4632)	MD – 66% TD – 109%
Permittivity g/m/ft² (ASTM D 4491 C)	180 g/m/ft ²
Fill Type	Switchgrass
Functional Longevity¹	Up to 1 year



Netting Sample



Fill Sample

¹Functional longevity ranges are estimates only. Site specific environmental conditions may result in significantly shorter or longer time periods.

Item List:

Part Number	Diameter	Total Linear Feet per pallet	Unit Length	Units per pallet	Unit Weight	Pallet Weight
RW95-12-SG	9.5-in	240-ft	12-ft	20	~ 41 lbs	~ 875 lbs
RW95-18-SG	9.5-in	252-ft	18-ft	14	~ 60 lbs	~ 895 lbs
RW12-10-SG	12-in	100-ft	10-ft	10	~ 60 lbs	~ 655 lbs

Shipping Specs:

Pallets per TL	up to 28
Shipping Dimensions	40L x 48W x 66H
Packaging	40 x 48 Pallet; Wattles are strapped together, and pallet is stretch-wrapped
Storage Life	Under Roof - 6 months / Outdoors - 3 months

BLACK HAWK™

Advanced Inlet Filter Mat



Sediment control device designed to prevent street flooding while being easy to install and service.

Silt sacks have limited sediment storage capacity and can easily blind whereby causing street flooding. BlackHawk™ has a much higher sediment storage capacity because sediment is kept above the grate. Its unique design – vertically oriented coir fibers, scalloped edging, hi-flow holes, and emergency dewatering plugs – make this device the most robust in its class.

BlackHawk™ is held to the grate with high strength rubberized magnets so installation, servicing, and removal is a snap – no skid steer or backhoe needed. This device can be cleaned and re-used multiple times.

Use for both E&SC and MS-4 Compliance.

Performance Details:

- 1300 GPM hydraulic flow rating (24"x48" grate size)
- Removes 99% .425 mm particle size and larger
- Independent testing shows 87% overall sediment removal
- Works with both Type-M and Type-C inlet configurations
- Mats for 2x2, 2x3, and 2x4 grates are in stock
- Easily cut to size, or custom sizes available with short lead-times

Other Benefits:

- Easy to handle - installs by just laying on the grate
- Much higher sediment storage capacity than bags
- Designed to be highly resistant to blinding and flooding
- Integrated emergency dewatering plugs
- 90% biodegradable content

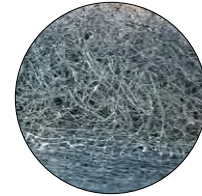


BLACKHAWK™

Advanced Inlet Filter Mat

BlackHawk Product Specs:

Mat Material Type	Natural Coconut Coir Fiber
Mat Color	Blue
Mat Thickness	2-in
Design Features	Scalloped Edges Hi-flow holes Emergency dewatering plugs (2 per mat) Magnetic grate attachment 90% biodegradable content
Inlet Compatibility	Type-M; Type-C
Flow Rating	1300 GPM (24"x48" grate size)
Functional Longevity	Dependant on site conditions & traffic

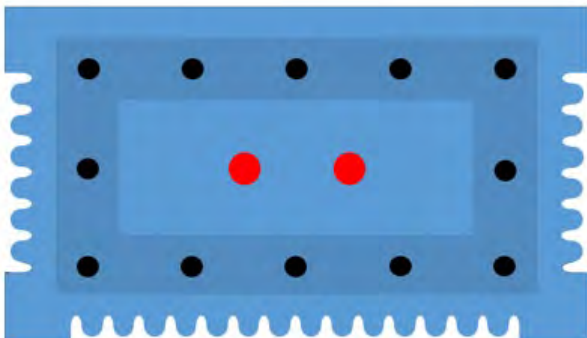


Fiber Sample

Item List:

Part Number	Grate Size	Finished Mat Size	Template	Configuration	Cases per Pallet
BM-2448-T100A	24" x 48"	32" x 54"	T100A	5 Units per Case	7
BM-2424-T200A	24" x 24"	28" x 32.5"	T200A	10 Units per Case	7
BM-1734-T301A	17" x 34"	24.5" x 43.5"s	T301A	5 Units per Case	7
BM-2727-T302A	27" x 27"	28" x 32"	T302A	10 Units per Case	7
BM-2436-T600A	24" x 36"	31.5" x 43.5"	T600A	5 Units per Case	7

Example Configuration:



BM-2448-T100A - Covers 24" x 48" Grate, Type-C or Type-M Inlet

SILTRON[®]

Advanced Silt Fence



Designed to provide the highest level of environmental protection on a construction site – no excuses and no compromises.

Independent testing shows industry leading performance in hydraulic flow under sediment load, sediment retention, and blinding resistance (TRI Environmental Testing).

Siltron functions as a dynamic filter-ponder which allows it to adjust to changing stormwater intensity across the entire face of the composite geotextile. Other fencing products either blind too fast (leading to physical failure) or allow too much sediment through.

Siltron uses a textured non-woven pre-filter designed to resist blinding and keep seeping long after the other products are blinded and physically failing. Even under extreme water and sediment load, Siltron keeps seeping.

Structural Details:

- Oak stakes with construction-grade staples
- Integrated anti-push spades for stake stability
- Strong 3-layer composite means no wire backer
- Highly resistant to blinding, punctures and tears

Other Benefits:

- Installs with just a skidsteer trenching attachment
- Grabs hydrocarbons and other viscous pollutants
- True 18-36 month functional longevity
- For use on pipelines, powerlines, brownfield sites, and in any quality watershed (HQ and EV)



Siltron Product Specs:

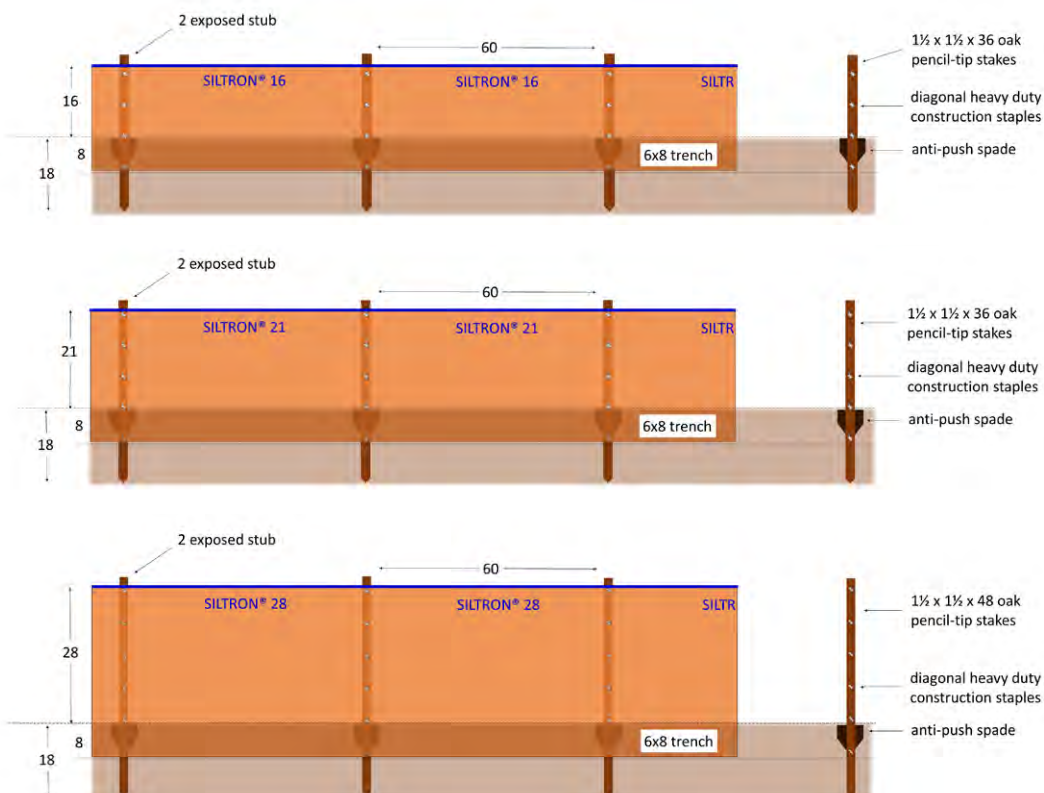
Material Type	Triple Layer Composite: Non-Woven Pre-Filter, Natural Fiber, Mono-filament Backer
Color	Orange
Functional Longevity	True 18-36 months
Design Features	Needle punched Anti-push spade stakes Top belting reinforcement Transmissivity cut-off/bury line indicator



Material Sample

Item List:

Part Number	Above Ground Height	Linear Feet per Bundle	Linear Feet per Pallet	Configuration
STN-16-PSB	16-inch	50-ft	500-ft	10 Pre-staked Bundles
STN-21-PSB	24-inch	50-ft	500-ft	10 Pre-staked Bundles
STN-28-PSB	28-inch	50-ft	500-ft	10 Pre-staked Bundles



CFS INSTALLER NETTING



Easy to Install. Hard to Beat.




Filtrex Netting is the original compost filter sock netting for field installation with blower trucks or track machines. Reliable and durable, multiple mesh types ensure the right fit for your job.

BASIC Installer Netting (5 mil HDPE)

Meet all specs with this versatile, light duty mesh that is good for most applications.

BASIC+ Installer Netting (MFPP)

Meets or exceeds specs with higher durability. Available in larger diameter sizes, for any project.

Product Name	Basic Installer Netting	Basic+ Installer Netting
Netting Material Type	5mil High Density Polyethylene (HDPE)	Multi-Filament Polypropylene (MFPP)
Uses	On-site blower truck installation	
Netting Opening Size	3/8"	3/8"
Diameters	12", 18"	8", 12", 18", 24", 32"
Functional Longevity/Project Duration ¹	up to 4 yr	up to 4 yr
Tensile Strength (ASTM D4595) ²	145 lbs	229 lbs
Packaging	Rucks	Rucks
Netting Color	 orange/black (12")  red/black (18")	 black

¹Functional longevity ranges are estimates only. Site specific environmental conditions may result in significantly shorter or longer time periods. ²Tensile Strength is based on 12" diameter using ASTM D4595, average of MD & TD. See Filtrex TechLink #3342 for full tensile strength testing.

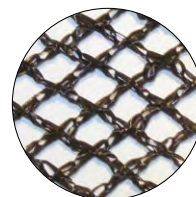


BASIC NET

CFS Installer Netting

Basic Net Product Specs:

Netting Material Type	BASIC Installer Netting 5mil High Density Polyethylene (HDPE)
Netting Degradation	Photodegradable
Netting Diameters	12", 18"
Netting Opening Size	3/8"
Netting Color	Orange/Black (12"); Red/Black (18")
Fabric Tensile Strength (ASTM D4595)¹	145 lbs
Functional Longevity²	up to 4 years



Netting Sample

¹Tensile Strength is based on 12" diameter using ATSM D4595. See Filtrexx TechLink #3342 for full tensile strength testing.

²Functional longevity ranges are estimates only. Site specific environmental conditions may result in significantly shorter or longer time periods.

Item List:

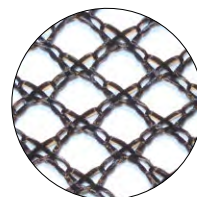
Part Number	Part Reference	Diameter	Unit Type	Length/Unit	Units per pallet	Feet per pallet
Installer - 12" Basic Ruck O-B	430-000253	12-in	Ruck	200-ft	90	18,000-ft
Installer - 18" Basic Ruck R-B	430-000258	18-in	Ruck	200-ft	72	14,400-ft

BASIC+ NET

CFS Installer Netting

Basic+ Net Product Specs:

Netting Material Type	BASIC + Installer Netting Multi-Filament Polypropylene (MFPP)
Netting Degradation	Photodegradable
Netting Diameters	8", 12", 18", 24", 32"
Netting Opening Size	3/8"
Netting Color	Black
Fabric Tensile Strength (ASTM D4595)¹	229 lbs
Functional Longevity²	up to 4 years



Netting Sample

¹Tensile Strength is based on 12" diameter using ATSM D4595. See Filtrex TechLink #3342 for full tensile strength testing.

²Functional longevity ranges are estimates only. Site specific environmental conditions may result in significantly shorter or longer time periods.

Item List:

Part Number	Part Reference	Diameter	Unit Type	Length/Unit	Units per pallet	Feet per pallet
Installer - 8" Basic + Ruck	430-000251	8-in	Ruck	200-ft	112	22,400-ft
Installer - 12" Basic + Ruck	430-000255	12-in	Ruck	200-ft	120	24,000-ft
Installer - 18" Basic + Ruck	430-000260	18-in	Ruck	200-ft	90	18,000-ft
Installer - 24" Basic + Ruck	430-000262	24-in	Ruck	200-ft	70	14,000-ft
Installer - 32" Basic + Ruck	430-000263	32-in	Ruck	200-ft	60	12,000-ft

CFS PALLET NETTING








The netting you choose matters.

The most competitive, advanced, and recognized CFS nettings in the erosion & sediment control industry are now available for you to manufacture & market.

Our line of Filtrex CFS Pallet Netting meets the durability, strength and longevity needs for all standard sediment control applications. Choose bulk lengths, or roll lengths to optimize your pre-filled, palletized compost filter sock.

- Variety of materials, diameters, and lengths
- 100% Biodegradable options available
- Ask about our 'Powered by Filtrex' Partner Program

Product Name	Standard Net CFS Pallet Netting	Durable+ Net CFS Pallet Netting	Natural Original Net CFS Pallet Netting	Natural+ Net CFS Pallet Netting
Netting Material Type	Multi-Filament Polypropylene (MFPP)	Multi-Filament Polypropylene (MFPP)	All Natural Biodegradable Cotton Fiber	All Natural Biodegradable Wood Fiber
Uses	standard sediment control applications	standard sediment control applications	leave on site; short-term	leave on site; long-term
Netting Opening Size	1/8"	1/8"	1/8"	1/8"
Diameters	8", 12", 18", 24"	5", 8", 12", 18", 24"	5", 8", 12"	5", 8", 12"
Functional Longevity/ Project Duration ¹	up to 5 yr	up to 5 yr	up to 12 mo	up to 18 mo
Tensile Strength (ASTM D4595) ²	561 lbs	546 lbs	175 lbs	249 lbs
Packaging	Rolls	Rolls	Rolls	Rolls
Mesh Color	 black	 black  black/medium green stripe	 beige	 off-white

¹Functional longevity ranges are estimates only. Site specific environmental conditions may result in significantly shorter or longer time periods.

²Tensile Strength is based on 12" diameter using ATSM D4595, average of MD & TD. See Filtrex TechLink #3342 for full tensile strength testing.

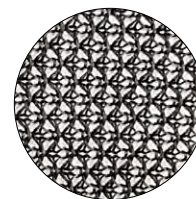


STANDARD NET

CFS Pallet Netting

Standard Net Product Specs:

Netting Material Type	Standard Pallet Netting Multi-Filament Polypropylene (MFPP)
Netting Degradation	Photodegradable
Netting Diameters	8", 12", 18", 24"
Netting Opening Size	1/8"
Netting Color	Black
Fabric Tensile Strength (ASTM D4595)¹	561 lbs
Functional Longevity²	up to 5 years



Netting Sample

¹Tensile Strength is based on 12" diameter using ATSM D4595. See Filtrex TechLink #3342 for full tensile strength testing.

²Functional longevity ranges are estimates only. Site specific environmental conditions may result in significantly shorter or longer time periods.

Item List:

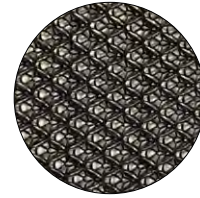
Part Number	Diameter	Unit Type	Length/ Unit	Units per pallet	Feet per pallet
Pallet Netting - 8" - Solid Black	8-in	Roll	440-ft	48	21,120-ft
Pallet Netting - 12" - Solid Black	12-in	Roll	360-ft	36	12,960-ft
Pallet Netting - 18" - Solid Black	18-in	Roll	240-ft	32	7,680-ft
Pallet Netting - 24" - Solid Black	24-in	Roll	260-ft	19	4,940-ft

DURABLE+ NET

CFS Pallet Netting

Durable+ Net Product Specs:

Netting Material Type	Durable+ Pallet Netting Heavy Duty Multi-Filament Polypropylene (MFPP)
Netting Degradation	Photodegradable
Netting Diameters	5", 8", 12", 18", 24"
Netting Opening Size	1/8"
Netting Color	Black; Black/Green Stripe
Fabric Tensile Strength (ASTM D4595)¹	546 lbs
Functional Longevity²	up to 5 years



Netting Sample



Netting Sample

¹Tensile Strength is based on 12" diameter using ATSM D4595. See Filtrexx TechLink #3342 for full tensile strength testing.

²Functional longevity ranges are estimates only. Site specific environmental conditions may result in significantly shorter or longer time periods.

Black/Green Stripe netting available exclusively through 'Powered by Filtrexx®' partner program.

Item List:

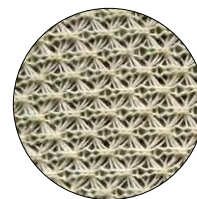
Part Number	Part Reference	Diameter	Unit Type	Length/Unit	Units per pallet	Feet per pallet
Pallet Netting - 5" Black NPP	N/A	5-in	Roll	203-ft	150	30,450-ft
Pallet Netting - 8" Black NPP	430-000401	8-in	Roll	224-ft	69	15,456-ft
Pallet Netting - 12" Black NPP	430-000402	12-in	Roll	254-ft (2@127')	42	10,668-ft
Pallet Netting - 18" Black NPP	430-000403	18-in	Roll	252-ft (4@63')	24	6,048-ft
Pallet Netting - 24" Black NPP	430-000058	24-in	Roll	228-ft (6@38')	12	2,736-ft

NATURAL ORIGINAL NET

CFS Pallet Netting

Natural Original Net Product Specs:

Netting Material Type	NATURAL ORIGINAL Pallet Netting All Natural Biodegradable Cotton Fiber
Netting Degradation	Biodegradable
Netting Diameters	5", 8", 12"
Netting Opening Size	1/8"
Netting Color	Beige
Fabric Tensile Strength (ASTM D4595) ¹	175 lbs
Functional Longevity ²	up to 12 months



Netting Sample

¹Tensile Strength is based on 12" diameter using ATSM D4595. See Filtrex TechLink #3342 for full tensile strength testing.

²Functional longevity ranges are estimates only. Site specific environmental conditions may result in significantly shorter or longer time periods.

Item List:

Part Number	Part Reference	Diameter	Unit Type	Length/Unit	Units per pallet	Feet per pallet
Pallet Netting - 5" Cotton	430-000010	5-in	Roll	211-ft	150	31,650-ft
Pallet Netting - 8" Cotton	430-000394	8-in	Roll	224-ft	69	15,456-ft
Pallet Netting - 12" Cotton	430-000395	12-in	Roll	254-ft (2@127'	42	10,668-ft

NATURAL+ NET

CFS Pallet Netting

Natural+ Net Product Specs:

Netting Material Type	NATURAL+ Pallet Netting All Natural Biodegradable Wood Fiber
Netting Degradation	Biodegradable
Netting Diameters	5", 8", 12"
Netting Opening Size	1/8"
Netting Color	Off-White
Fabric Tensile Strength (ASTM D4595)¹	249 lbs
Functional Longevity²	up to 18 months



Netting Sample

¹Tensile Strength is based on 12" diameter using ATSM D4595. See Filtrex TechLink #3342 for full tensile strength testing.

²Functional longevity ranges are estimates only. Site specific environmental conditions may result in significantly shorter or longer time periods.

Item List:

Part Number	Part Reference	Diameter	Unit Type	Length/Unit	Units per pallet	Feet per pallet
Pallet Netting - 5" Nat +	430-000411	5-in	Roll	211-ft	150	31,650-ft
Pallet Netting - 8" Nat +	430-000409	8-in	Roll	224-ft (2@112')	69	15,456-ft
Pallet Netting - 12" Nat +	430-000408	12-in	Roll	254-ft (2@127')	42	10,668-ft

WATTLE NET

Straw Wattle Netting



Build a better wattle with common & advanced netting options.

Straw wattles are a staple of any BMP toolbox. Our line of Filtrex straw wattle netting allows you to manufacture a variety of high-quality wattles.

Extruded Net (PE)





The most widely used extruded netting for common wattles, available in black or green.

Natural Original Net (Cotton fiber)

100% biodegradable; tighter knit for cleaner handling

Natural+ Net (Wood fiber)

100% biodegradable; tighter knit for cleaner handling

Product Name	Extruded Wattle Net	Natural Original Wattle Net	Natural+ Wattle Net
Netting Material Type	Extruded Polyethylene UV stabilized	All Natural Biodegradable Cotton Fiber	All Natural Biodegradable Wood Fiber
Uses	standard applications	leave on site; short-term	leave on site; long-term
Netting Opening Size	N/A	3/8"	3/8"
Diameters	9", 12"	9", 12"	9", 12"
Functional Longevity/ Project Duration ¹	N/A	up to 12 mo	up to 18 mo
Tensile Strength RW82004 ² ASTM D4595 ³	26 +/- 1 kg (9" Black) 21 +/- 2 kg (12" Black) 19 min kg (9" Green) 25 min kg (12" Green) ²	167 lbs ³	N/A
Packaging	Rolls	Rolls	Rolls
Mesh Color	 black  green	 beige	 off-white



¹Functional longevity ranges are estimates only. Site specific environmental conditions may result in significantly shorter or longer time periods.

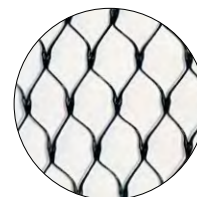
²Tensile Strength is based on 12" diameter using ATSM D4595, average of MD & TD. See Filtrex TechLink #3342 for full tensile strength testing.

EXTRUDED NET

Straw Wattle Netting

Extruded Wattle Net Product Specs:

Netting Material Type	Common Wattle Netting Extruded Polyethelene
Netting Degradation	UV Stabilized
Netting Diameters	9", 12"
Netting Color	Black or Green
Fabric Tensile Strength (Test Method RW82004)	26 +/- 1 kg (9" Black) 21 +/- 2 kg (12" Black) 19 min kg (9" Green) 25 min kg (12" Green)



Netting Sample

Item List:

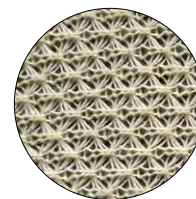
Part Number	Part Reference	Diameter	Unit Type	Length/Unit	Units per pallet	Feet per pallet
Wattle Net - 9"	415-000262	9-in	Roll	3,000-ft	18	54,000-ft
Wattle Net - 12"	415-000217	12-in	Rolls	3,000-ft	18	54,000-ft
Wattle Net - 9" Green	415-000485	9-in	Roll	3,000-ft	18	54,000-ft
Wattle Net - 12" Green	415-000484	12-in	Roll	3,000-ft	18	54,000-ft

NATURAL ORIGINAL NET

Straw Wattle Netting

Natural Original Wattle Net Product Specs:

Netting Material Type	Natural Original Wattle Netting All Natural Biodegradable Cotton Fiber
Netting Degradation	Biodegradable
Netting Diameters	9", 12"
Netting Opening Size	3/8"
Netting Color	Beige
Fabric Tensile Strength (ASTM D4595) ¹	167 lbs
Functional Longevity ²	up to 12 months



Netting Sample

¹Tensile Strength is based on 12" diameter using ATSM D4595. See Filtrexx TechLink #3342 for full tensile strength testing.

²Functional longevity ranges are estimates only. Site specific environmental conditions may result in significantly shorter or longer time periods.

Item List:

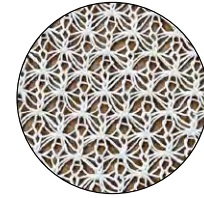
Part Number	Part Reference	Diameter	Unit Type	Length/Unit	Units per pallet	Feet per pallet
Pallet Netting - 9" Nat Wattle	430-000033	9-in	Roll	270-ft	180	48,600-ft
Pallet Netting - 12" Nat Wattle	430-000034	12-in	Roll	280-ft	75	11,760-ft

NATURAL+ NET

Straw Wattle Netting

Natural+ Wattle Net Product Specs:

Netting Material Type	Natural + Wattle Netting All Natural Biodegradable Wood Fiber
Netting Degradation	Biodegradable
Netting Diameters	9", 12"
Netting Opening Size	3/8"
Netting Color	Off-White
Fabric Tensile Strength (ASTM D4595) ¹	N/A
Functional Longevity ²	up to 18 months



Netting Sample

¹Tensile Strength is based on 12" diameter using ATSM D4595. See Filtrexx TechLink #3342 for full tensile strength testing.

²Functional longevity ranges are estimates only. Site specific environmental conditions may result in significantly shorter or longer time periods.

Item List:

Part Number	Diameter	Unit Type	Length/Unit	Units per pallet	Feet per pallet
Pallet Netting - 9" Nat + Wattle	9-in	Roll	270-ft	180	48,600-ft
Pallet Netting - 12" Nat + Wattle	12-in	Roll	280-ft	75	11,760-ft

INSTALLATION CLAW



Speeds up the installation of palletized filter sock.

- Hydraulically powered.
- Easy to use – clamp down on unopened material to travel, lift the arm to allow the flop of sock, clamp down and backup to stretch sock into straight line.
- Stabilizes pallets while driving over uneven ground.
- Use with skid steer or telehandler.
- Install compost filter sock, switchgrass filter sock, or diversion sock.
- Use to safely unload pre-filled sock from flatbed truck.



STRAWMAX®

Bagged Seeding Straw



Getting grass to grow shouldn't be so painful.

StrawMax is Restoration Seeding Straw that works.

- Prechopped for easy hand spreading
- Use for seeding or temp erosion control
- Great for touchups or along blanketing
- Light weight wrapped bales on a pallet
- Covers up to 500 Sq. Ft. per bale
- Includes tackifier to prevent blow away
- Weather tight bale wrapping

Product Specs:

Pounds per bag	~ 22 lbs.
Ingredients	Short chopped agricultural straw (straw from wheat, oat, and barley production); guar gum added as an environmentally friendly tackifier
Tackifier per bag	3 oz
Coverage per bag	Up to 500 sq. ft.

Item List:

Part Number	Bag Dimensions	Bag Weight	Bags per Pallet	Pallet Weight
Bagged Straw – Filled – StrawMax	24'x16'x9.5'	22 lbs. (± 10%)	40	900 lbs

Shipping Specs:

Pallets per TL	26
Shipping Dimensions / Packaging	40L x 48W x 66H / 40 x 48 Pallet
Storage Life	Under Roof - 6 months - must be stored under roof



Rolled Erosion Control Products for temporary and permanent slope and channel stabilization.

Vegetative growth is critical to the restoration of job sites. ErosionTech by MKB strives to make quality products that protect your investment. Available in a variety of fills, nettings, longevities, and roll sizes.

- Rapid Degredation Blankets
- Short Term Blankets
- Extended Term Blanket
- Permanent Turf Reinforcement Matting
- Single Net
- Double Net
- Triple Net
- Biodegradable Net

Typical Projects:

- Commercial
- Highways
- Mines
- Pipelines
- Woodlands
- Golf Courses
- Residential Lawns
- Landfill Caps

100% Biodegradable Blankets available



PRODUCT	DESCRIPTION	FUNCTIONAL LONGEVITY	TYPICAL APPLICATION	FHWA-FP03 ECTC CATEGORY	SHEAR STRESS (lbs/ft²)
SHORT TERM EROSION CONTROL BLANKETS					
ETRS-1	100% straw fill; 1.5lb photodegradable polypropylene top net	12 MO.	4:1 to 3:1 Slopes, Low Flow Channels	2.C	2.05
ETRS-1-RD	100% straw fill; 1.5lb accelerated photodegradable polypropylene top net	90 DAYS	4:1 to 3:1 Slopes, Low Flow Channels	1.C	2.05
ETRS-2	100% straw fill; 1.5lb photodegradable top and bottom net	12 MO.	3:1 to 2:1 Slopes, Medium Flow Channels	2.D	2.0
ETRS-2-RD	100% straw fill; 1.5lb accelerated photodegradable top and bottom net	90 DAYS	3:1 to 2:1 Slopes, Medium Flow Channels	1.D	2.0
ETX-1	100% excelsior wood fill; 1.5lb polypropylene top net	12 MO.	3:1 to 2:1 Slopes, Medium Flow Channels	2.C	ND
ETX-2	100% excelsior wood fill; 1.5lb polypropylene top and bottom net	12 MO.	2:1 to 1:1 Slopes, Medium Flow Channels	2.D	2.5
EXTENDED TERM EROSION CONTROL BLANKETS					
ETSC-7030	70% straw 30% coconut fill; 3lb UV stabilized polypropylene top net, 1.5lb photodegradable bottom net	24 MO.	2:1 to 1:1 Slopes, Medium Flow Channels	3.B	2.5
ETX-3	100% excelsior wood fill; 3lb UV stabilized polypropylene top and bottom net	24 MO.	2:1 to 1:1 Slopes, Medium Flow Channels	3.B	ND
ETC-100	100% coconut fill; 3lb UV stabilized polypropylene top and bottom net	36 MO.	1:1 and Greater Slopes, High Flow Channels	4	ND
BIODEGRADABLE EROSION CONTROL BLANKETS					
ETRS-1-BN	100% straw fill; 55gsm/9.3lb jute top net	12 MO.	4:1 to 3:1 Slopes, Low Flow Channels	2.C	ND
ETRS-2-BN	100% straw fill; 55gsm/9.3lb jute top and bottom net	12 MO.	3:1 to 2:1 Slopes, Medium Flow Channels	2.D	2.02
ETSC-7030-BN	70% ag straw 30% coconut fill; 55gsm/9.3lb jute top and bottom net	18 MO.	2:1 to 1:1 Slopes, Medium Flow Channels	3.B	2.0
ETX-1-BN	100% excelsior fill; 55gsm/9.3lb jute top net	12 MO.	3:1 to 2:1 Slopes, Medium Flow Channels	2.C	ND
ETX-2-BN	100% excelsior wood fill; 55gsm/9.3lb jute top and bottom net	12 MO.	2:1 to 1:1 Slopes, Medium Flow Channels	2.D	ND
ETC-100-BN	100% coconut fill; 55gsm/9.3lb jute top and bottom net	18 MO.	1:1 and Greater Slopes, High Flow Channels	4	2.32
PERMANENT TRM EROSION CONTROL BLANKETS					
ETPP-8	100% synthetic UV stabilized fill 8oz/yd^2; 5lb UV stabilized top and bottom net	1:1 and Greater Slopes, Medium to High Flow Channels, Stream Banks, Shorelines		5A,	ND
ETPP-10	100% synthetic UV stabilized fill 10oz/yd^2; 5lb UV stabilized top and bottom net			5A, 5B, 5C	13.0 (vegetated)
ETPP-12	100% synthetic UV stabilized fill 12oz/yd^2; 5lb UV stabilized top and bottom net			5C	ND
ETTT-PP	100% synthetic UV stabilized fill; UV stabilized top, middle, and bottom net			3B	2.32
ETTT-SC	70% ag straw, 30% coconut fill; UV stabilized top, middle, and bottom net			5A, 5B, 5C, 5D	2.39
ETTT-C	100% coconut fill; UV stabilized top, middle, and bottom net			3B	2.4
STAPLES BY THE CARTON					
PRODUCT	DESCRIPTION	QUANTITY			
ETST-6	6"x1"x6" 11 gauge sod staples	1000			
ETST-8	8"x1"x8" 8 gauge sod staples	500			
ETST-6RDT	6" 11 gauge round top staple	1000			
ETST-4BIO	4" Biodegradable Greenstake sod staples	500			

GEOTEXTILES



A variety of Geotextiles, in stock for your next project.

Geotextiles are commonly used in civil engineering projects including roads, railways, drainage, agriculture, coastal work, and more.

MKB carries a wide variety of geotextiles:

- Non-Woven Fabrics
- Woven Stabilization Fabrics
- Woven Monofilaments
- Geogrids

Want to make your project material ordering easier? We make it simple to add geotextiles to your mixed truckload order.

Geotextile Functions:

- Filtration
- Drainage
- Reinforcement
- Cushion
- Waterproofing
- Separation



GEOTEXTILES

NON-WOVEN FABRICS

Product	Description	SY per Roll
GN310-125-360	12.5 x 360 3.2oz Non Woven	500
GN350-125-360	12.5 x 360 3.5oz Non Woven	500
GN400-125-360	12.5 x 360 4oz Non Woven	500
GN450-125-360	12.5 x 360 4.5oz Non Woven	500
GN600-125-360	12.5 x 360 6oz Non Woven	500
GN180-150-300	15 x 300 8oz Non Woven	500
GE110-150-300	15 x 300 10oz Non Woven	500
GE112-150-300	15 x 300 PADOT Class 4A	500
GN116-150-150	15 x 150 16oz Non Woven	250
GN310-003-360	3 x 360 Non Woven Filter Fabric	120
GN310-004-360	4 x 360 Non Woven Filter Fabric	160
GN310-625-360	6.25 x 360 Non Woven Filter Fabric	250
GN310-077-360	7.5 x 360 Non Woven Filter Fabric	300

WOVEN STABILIZATION FABRICS

Product	Description	SY per Roll
GW200-125-432	12.5 x 432 200# PA DOT Class 3	600
GW200-125-054	12.5 x 54 200# Woven Geotextile	75
GW300-125-360	12.5 x 360 300# Woven Geotextile	500
GW550-150-300	15 x 300 Woven MS Geotextile	500
GW440-150-300	15 x 300 PADOT Class 4C	500

WOVEN MONOFILAMENTS

Product	Description	SY per Roll
GM404-120-300	12 x 300 PADOT Class 1	400
GM706-006-300	6 x 300 Woven Monofilament	200

GEOGRIDS

Product	Description	SY per Roll
GG11-1295-246	13.1 x 246 Base Geogrid	358
GG12-1295-164	13.1 x 164 Base Geogrid	239

ENVIROSOXX®

Pollutant Filter Sock



The most versatile and cost effective filter for stormwater pollutant removal.

A passive filtration system ready to install on any site, EnviroSoxx targets the most common pollutants in stormwater runoff. EnviroSoxx contains compost FilterMedia™ plus natural sorbents used to increase pollutant removal capacity, and to reduce pollutant transport in runoff and absorption by plants. Recommended quarterly replacement or per site conditions.

EnviroSoxx is available in two filter blends to target common pollutants.

- **Industrial Blend Filter:** Targets a range of heavy metals, hydrocarbons, nutrients, sediment, and pH.
- **Advanced Blend Filter:** Targets bacteria, nutrients, hydrocarbons, select heavy metals, and sediment.

Applications:

- Inlets & Outfalls
- Ditches & Swales; Biofiltration
- Perimeters & Wraps

Other Benefits:

- Reduces pollutant loads
- Fits existing infrastructure
- Easy to maintain & replace
- Third-party researched
- EXTREME durable netting stands up to hard surfaces and harsh site conditions
- Optional handles available as add-on



ENVIROSOXX®

Pollutant Filter Sock

EnviroSoxx Product Specs:

Netting Material Type	EXTREME Pallet Netting Multi-Filament Polypropylene (MFPP)
Netting Degradation	Photodegradable
Netting Diameters	8", 12"
Netting Opening Size	1/16"
Netting Color	Light Green/White Stripe (Industrial Blend) Light Green/Black Stripe (Advanced Blend)
Fabric Tensile Strength (ASTM D4595) ¹	929 lbs
Fill Type	Certified & Locally Sourced Composted FilterMedia™ + Natural Additives
Functional Longevity ²	Quarterly replacement recommended
Staking Recommendation	Every 10-ft (stakes not included)



Netting Sample



Netting Sample



Fill Sample

¹Tensile Strength is based on 12" diameter using ATSM D4595. See Filtrex TechLink #3342 for full tensile strength testing.

²Functional longevity ranges are estimates only. Site specific environmental conditions may result in significantly shorter or longer time periods.

Item List:

Part Number (Industrial)	Part Number (Advanced)	Diameter	Total Linear Feet per pallet	Unit Length	Units per pallet	Pallet Weight
T08-80S8W	T08-80S8A	8-in	80-ft	10-ft	8	~ 1200 lbs
T08-160S16W	T08-160S16A	8-in	160-ft	10-ft	16	~ 1950 lbs
T08-160S2W	T08-160S2A	8-in	160-ft	80-ft	2	~ 1950 lbs
T12-50S5W	T12-50S5A	12-in	50-ft	10-ft	5	~ 1200 lbs
T12-100S10W	T12-100S10A	12-in	100-ft	10-ft	10	~ 1950 lbs
T12-100W	T12-100A	12-in	100-ft	100-ft	1	~ 1950 lbs

Note: Optional handles available as add-on

Shipping Specs:

Pallets per TL	26
Shipping Dimensions	40L x 48W x 66H
Packaging	40 x 48 Pallet with Plastic Stretch-Wrap
Storage Life	Under Roof, with Ventilation - 6 months / Outdoors, Dry - 3 months

STORMEXX[®]

Catch Basin Filter



Designed to fit most existing storm water drain systems to capture sediment and pollutants.

StormExx uses filtering media in a replaceable cartridge for under the grate stormwater treatment. Perfect for use in urban watersheds, sensitive receiving waters, and TMDL (§303d) listed water bodies.

StormExx is available in two filter blends to target common pollutants.

- **Industrial Blend Filter:** Targets a range of heavy metals, hydrocarbons, nutrients, and sediment.
- **Advanced Blend Filter:** Targets bacteria, nutrients, hydrocarbons, select heavy metals, and sediment.

Pair StormExx with EnviroSoxx Pollutant Filters for added pollutant protection above and below the grate.

Applications:

- Roadways & Parking Lots
- Oil & Fuel Spills
- Industrial Sites & Factories
- Airports & Military Bases

Other Benefits:

- Easy to install, maintain and replace
- Fits existing storm drain systems - round or rectangular
- Optional sample port is available
- Option for double units for qualifying inlets
- Nominal flow rate of 15-40 gpm; overflow bypass of 500+ gpm*

*Flow rates based on controlled in-house testing; rates may vary and are dependent on site specific environmental conditions. Consult maintenance guide for performance criteria.



STORMEXX®

Catch Basin Filter

StormExx Product Specs:

Filter Netting Material Type	High-Density Polypropylene (HDPE)
Filter Netting Degradation	UV Stable
Filter Netting Diameter	10"
Filter Length	10", 20"
Filter Netting Opening Size	75% screen
Filter Netting Color	Green/Black Stripe
Filter Fill Type	Certified & Locally Sourced Composted FilterMedia™ + Natural Additives
Frame Materials	HDPE housing; Stainless Steel or HDPE support system
Flow Rate¹	Nominal flow rate of 15-40 gpm; overflow bypass of 500+ gpm
Functional Longevity²	Quarterly replacement recommended or per site plans.
Additional Features	Sample Port (optional add-on) Trash Capture Screen (optional add-on)
Filter Storage Life	Under Roof, with Ventilation - 6 months / Outdoors, Dry - 3 months



Netting Sample



Fill Sample

¹Flow rates based on controlled in-house testing; rates may vary and are dependent on site specific environmental conditions. Consult maintenance guide for performance criteria.

²Functional longevity ranges are estimates only. Site specific environmental conditions may result in significantly shorter or longer time periods.

Item List:

Description - Frame Options	
Rectangular Frame - Stainless Steel	
Rectangular Frame - Stainless Steel - Double	
Rectangular Frame - HDPE	
Square Frame - Stainless Steel	
Square Frame - HDPE	
Round Frame - Stainless Steel	
Round Frame - HDPE	
Part Number	Description - Replacement Filters
SX100	Replacement Filter, 20" Industrial Blend
SX102	Replacement Filter, 10" Industrial Blend
SX100A	Replacement Filter, 20" Advanced Blend
SX102A	Replacement Filter, 10" Advanced Blend

Notes:

- Inspection/Sampling Port and Trash Capture Screen are available for an additional charge.
- Industrial Blend Filters made to stock; Advanced Blend Filters made to order.

Example Configuration:



GROSOXX®

Vegetated Filter Sock



Quickly establish vegetation for Low Impact Development & Green Infrastructure applications.

GroSoxx is used to quickly establish vegetation for LID and green infrastructure applications such as rain gardens, bioswales, channels, filtration systems, gabions and more.

GroSoxx uses DURABLE mesh netting and is pre-filled with certified, composted GrowingMedia™ to provide a stable and fertile environment for plant growth.

Easily plant GroSoxx after construction is complete, or call for a custom quote for pre-seeded GroSoxx.

Applications:

- Rain Gardens
- Bioswales
- Channels
- Filtration Systems
- Gabions

Other Benefits:

- Stable & fertile growing environment
- Plant after construction, or available pre-seeded
- Easy & quick to install



GroSoxx Product Specs:

Netting Material Type	Durable Netting Multi-Filament Polypropylene (MFPP)
Netting Degradation	Photodegradable
Netting Diameters	8", 12"
Netting Opening Size	1/8"
Netting Color	Black
Fabric Tensile Strength (ASTM D4595)¹	385 lbs
Fill Type	Certified & Locally Sourced Composted Growing Media
Functional Longevity²	Up to 5 years

¹Tensile Strength is based on 12" diameter using ATSM D4595. See Filtrex TechLink #3342 for full tensile strength testing.

²Functional longevity ranges are estimates only. Site specific environmental conditions may result in significantly shorter or longer time periods. Vegetation prevents UV exposure and may extend functional longevity.



Netting Sample



Fill Sample

Item List:

Part Number	Diameter	Unit Length	Weight/unit (approx.)*	Units per pallet
SGR08-2	8-in	2-ft	43 lbs	up to 50
SGR08-3	8-in	3-ft	65 lbs	up to 30
SGR12-2	12-in	2-ft	72 lbs	up to 30
SGR12-3	12-in	3-ft	105 lbs	up to 20

Shipping Specs:

Pallets per TL	
Shipping Dimensions	40L x 48W x 66H
Packaging	40 x 48 Pallet with Clear, Black, or Blue Plastic Stretch-Wrap or Super Sack
Storage Life	Under Roof - 6 months / Outdoors - 3 months (un-seeded) Storage not recommended for pre-seeded GroSoxx

Notes:

For pre-seeded GroSoxx, call for custom quote and seed mix options.

*Pre-filled GroSoxx weights are approximate and vary based on moisture content. Pallets not to exceed 2,200 lbs.

GREENLOXX®

Vegetated Wall, Slope & Shore System



Designed for Strength. Rooted in Sustainability.

GreenLoxx® vegetated systems allow for the restoration of eroded or damaged slopes, riparian waterways, shoreline banks, and more. Create attractive, naturally vegetated landscapes without the use of hard concrete materials on your restoration projects.

GreenLoxx VSF (Vegetated Slope Facing):

Typically used to protect the face of the slope or bank from erosion. Requires minimal base preparation/excavation, and no backfill. Geogrid is wrapped over the GroSoxx® and secured with soil anchors.

GreenLoxx MSE (Mechanically Stabilized Earth):

Typically used to build a more vertical, structural wall. GroSoxx are stacked in courses wrapped in geogrid and tied back into the compacted fill behind the face of the wall.

Applications:

- Streambanks
- Steep Slopes
- Shorelines
- Retaining Walls
- Roadside Slopes

Contact MKB for availability & system packages. May require engineering and permits depending upon size and scope of project.



GREENLOXX[®]

Vegetated Wall, Slope & Shore System

Configurations:

System Name	MSE	Slope Degree	Anchors	Geogrid	GroSoxx [®] Size	Purpose
GreenLoxx VSF Vegetated Slope Facing	No	up to 60°	Yes	Yes	8"x3'	Protect slope surface from erosion
GreenLoxx MSE Mechanically Stabilized Earth	Yes	70° - 90°	No	Yes	12"x2'	Gain back land
GreenLoxx MSE - RSS Reinforced Soil Slope	Yes	50° - 70°	No	Yes	12"x2'	Gain back land

Components:

GroSoxx: Durable mesh is filled with Certified GrowingMedia™ as the basis to quickly establish vegetation.

Geogrid: Used to wrap layers of GroSoxx. Biaxial pattern provides strength and features a 2"x2" opening to eliminate cutting the grid for planting.

Soil Anchors: Used in GreenLoxx VSF to secure layers of geogrid and GroSoxx.

Vegetation: Options include pre-seeded GroSoxx, live staking, broadcast seeding, or plugs.

Product Specs (GroSoxx):

Netting Material Type	DURABLE Netting Multi-Filament Polypropylene (MFPP)
Netting Degradation	Photodegradable
Netting Diameters	8", 12"
Netting Opening Size	1/8"
Netting Color	Black
Fabric Tensile Strength (ASTM D4595)¹	385 lbs
Fill Type	Certified & Locally Sourced Composted GrowingMedia
Functional Longevity²	Up to 5 years

¹Tensile Strength is based on 12" diameter using ATSM D4595. See Filtrex TechLink #3342 for full tensile strength testing.

²Functional longevity ranges are estimates only. Site specific environmental conditions may result in significantly shorter or longer time periods. Vegetation prevents UV exposure and may extend functional longevity.



Netting Sample



Fill Sample

Contact MKB for availability & system packages. May require engineering and permits depending upon size and scope of project.

MKB

Stormwater Innovation

888-578-0777

mkbcompany.com | info@mkbcompany.com

El Mirage, AZ 85335

Vernalis, CA 95385

Greeley, CO 80631

Marshfield, MO 65706

Columbus, OH 43807

Sugarcreek, OH 44681

Belleville, PA 17004

Philadelphia, PA 19154

Pittsburgh, PA 15063

Abbeville, SC 29620

Hixson, TN 37343

Ferrum, VA 24088

Austin, TX 78719

Product availability & selection may vary due to local manufacturing and/or regulatory requirements.

©2023 MKB Company, LLC. All Rights Reserved. Updated/Printed May 2023. Version 2.0.

All statements, product characteristics, and performance data contained herein are believed to be reliable based on observation and testing, but no representations, guarantees, or warranties of any kind are made as to accuracy, suitability for particular applications, or the results to be obtained. Nothing contained herein is to be considered to be permission or a recommendation to use any proprietary process or technology without permission of the owner. No warranty of any kind, expressed or implied, is made or intended.

EnviroSoxx®, Filtrexx®, Filtrexx SiltSoxx®, GreenLoxx®, GroSoxx®, Powered by Filtrexx®, Siltron®, Storm Catcher®, StormExx®, Straw Max®, Switch Sock®, the branch & leaf logo®, and the color GREEN® are Registered Trademarks of MKB Company. DiversionSoxx™, FilterMedia™, GrowingMedia™, and SwitchSoxx™, are Trademarks of MKB Company.

US Patents 7,226,240; 7,452,165; 8,439,607; 8,740,503; 10,167,620; 10,704,247; 11,098,472; 11,466,413 and Patents Pending 63/221,435; 62/964,021; 18/114,601; 62/349,890; 17/459,534; 63/070,891 may apply.

MKB AUTHORIZED DISTRIBUTOR:

